

# Storm Surge Hazard Map

## ① Nishio / Hananoki / Nishinomachi / Fukuchi Nanbu / Fukuchi Hokubu District

Issued by: Rivers and Harbor Section, Construction Department, Nishio City TEL 0563-65-2151  
Crisis Management Section, Crisis Management Office TEL 0563-65-2137

Date issued: March 2023

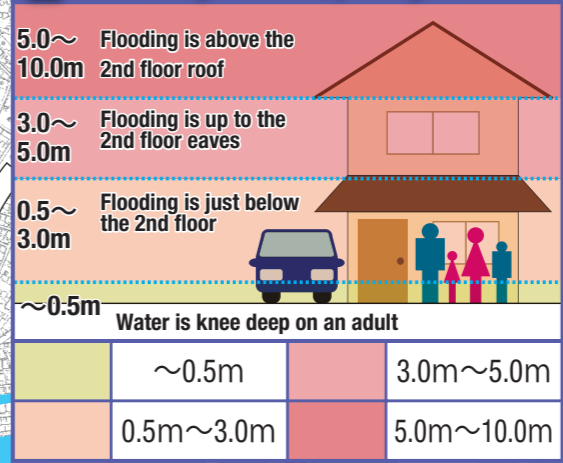
### Areas expected to be flooded during a storm surge

This map shows the flood depth of areas expected to be flooded during a storm surge in Aichi Prefecture. Areas expected to be flooded during a storm surge in Aichi Prefecture is based on Article 14-3 of the Flood Prevention Act and assumes the flooded area and flood depth when flooding occurs due to the highest storm surge assumed possible. A simulation was conducted assuming the worst-case scenario in which a typhoon with an atmospheric pressure similar in scale to the Muroto Typhoon, the largest typhoon to ever make landfall in Japan, is set at multiple routes that have a significant impact on the coast of Mikawa Bay and Ise Bay, causing flood defenses such as embankments and floodgates to burst when their design conditions are reached. The maximum flooded area and flood depth are extracted from the results of this simulation. The areas expected to be flooded are only assumptions. Flooding may occur in areas outside the areas expected to be flooded (locations not colored on the map) and the flood depth may be deeper depending on the effect and such of local topography.

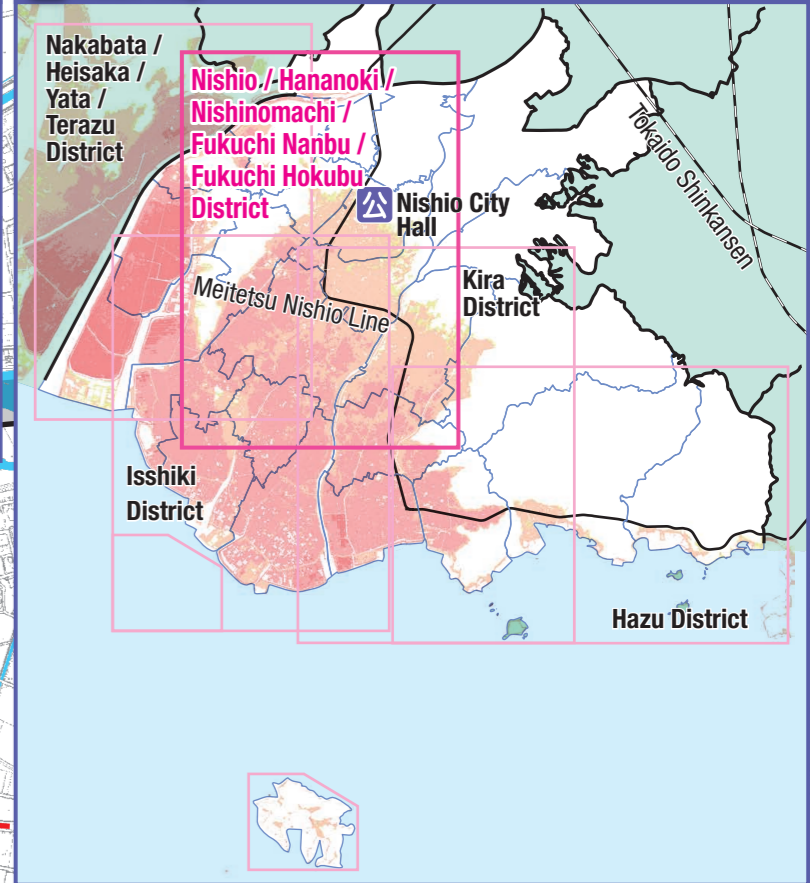
**[Typhoon size]** Central pressure 910 hPa and moving speed 73 km/h during landfall of Muroto Typhoon class

**[Design conditions]** Floodgates at the new and full moon average full tide level (this is the average tide level of the highest full tide of each month that appears within 5 days of the 1st day of the month (new moon) and 15th day of the month (full moon)) are closed according to operating regulations, and burst together with embankments when the design conditions are reached.

### Storm surge flood depth legend



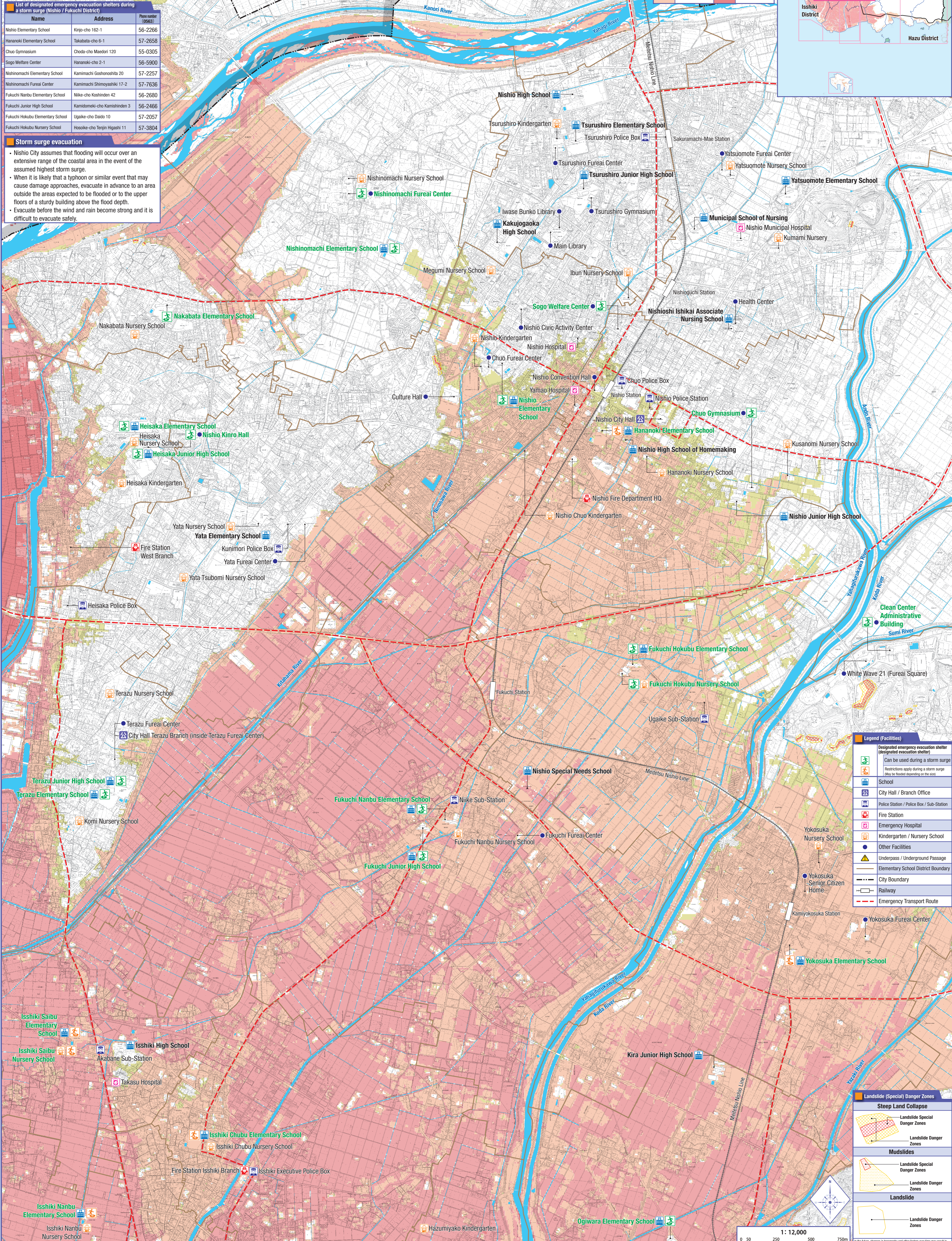
### Index Map



#### List of designated emergency evacuation shelters during a storm surge (Nishio / Fukuchi District)

Name	Address	Phone number (0563)
Nishio Elementary School	Kiryo-cho 162-1	56-2266
Hananoki Elementary School	Takabata-cho 6-1	57-2658
Chuo Gymnasium	Choda-cho Maedori 120	55-0305
Sogo Welfare Center	Hananoki-cho 2-1	56-5900
Nishinomachi Elementary School	Kamimachi Goshonoshita 20	57-2257
Nishinomachi Fureai Center	Kamimachi Shimoyashiki 17-2	57-7636
Fukuchi Nanbu Elementary School	Niike-cho Koshinden 42	56-2680
Fukuchi Junior High School	Kamidomeki-cho Kamishinden 3	56-2466
Fukuchi Hokubu Elementary School	Ugaiki-cho Daido 10	57-2057
Fukuchi Hokubu Nursery School	Hosoike-cho Terjin Higashi 11	57-3804

- #### Storm surge evacuation
- Nishio City assumes that flooding will occur over an extensive range of the coastal area in the event of the assumed highest storm surge.
  - When it is likely that a typhoon or similar event that may cause damage approaches, evacuate in advance to an area outside the areas expected to be flooded or to the upper floors of a sturdy building above the flood depth.
  - Evacuate before the wind and rain become strong and it is difficult to evacuate safely.



#### Legend (Facilities)

	Designated emergency evacuation shelter (designated evacuation shelter)
	Can be used during a storm surge
	Restrictions apply during a storm surge (May be flooded depending on the size)
	School
	City Hall / Branch Office
	Police Station / Police Box / Sub-Station
	Fire Station
	Emergency Hospital
	Kindergarten / Nursery School
	Other Facilities
	Underpass / Underground Passage
	Elementary School District Boundary
	City Boundary
	Railway
	Emergency Transport Route

#### Landslide (Special) Danger Zones

	Steep Land Collapse
	Landslide Special Danger Zones
	Landslide Danger Zones
	Mudslides
	Landslide Special Danger Zones
	Landslide Danger Zones
	Landslide
	Landslide Danger Zones

