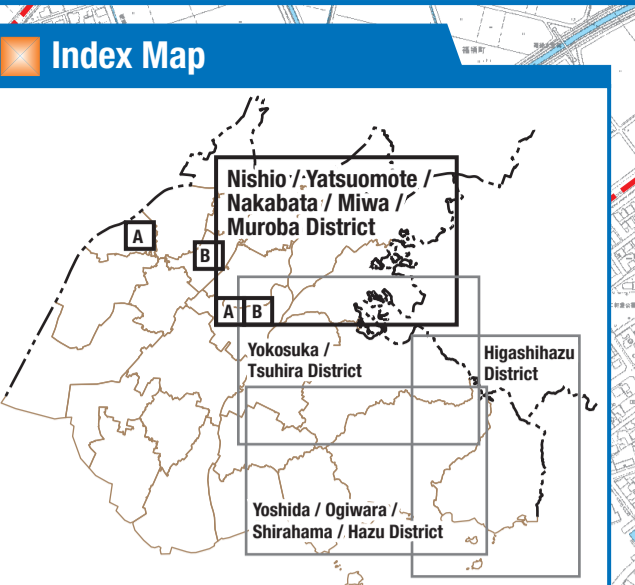
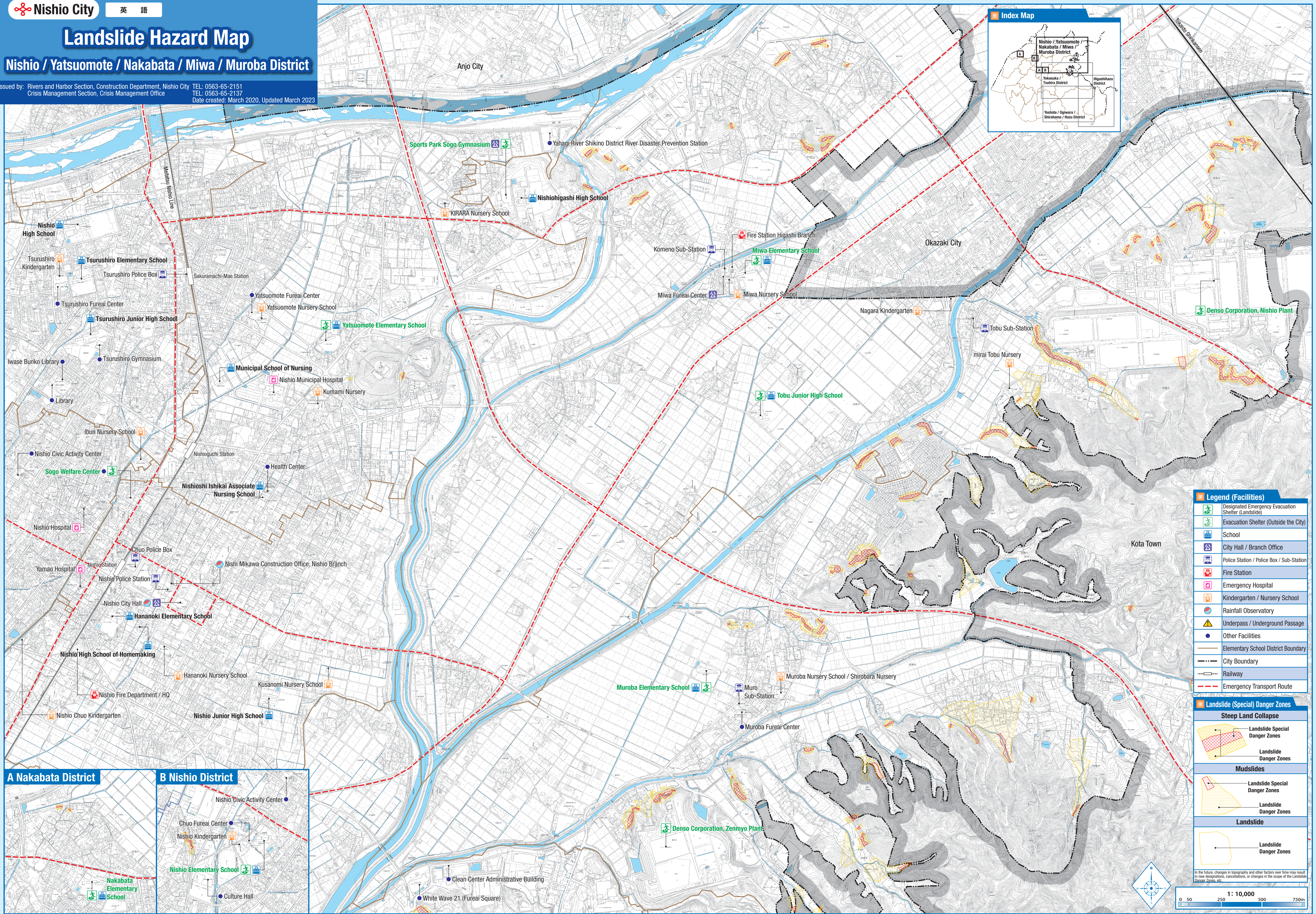


Landslide Hazard Map

Nishio / Yatsuomote / Nakabata / Miwa / Muroba District

Issued by: Rivers and Harbor Section, Construction Department, Nishio City TEL: 0563-65-2151
 Crisis Management Section, Crisis Management Office TEL: 0563-65-2137
 Date created: March 2020, Updated March 2023



Legend (Facilities)	
	Designated Emergency Evacuation Shelter (Landslide)
	Evacuation Shelter (Outside the City)
	School
	City Hall / Branch Office
	Police Station / Police Box / Sub-Station
	Fire Station
	Emergency Hospital
	Kindergarten / Nursery School
	Rainfall Observatory
	Underpass / Underground Passage
	Other Facilities
	Elementary School District Boundary
	City Boundary
	Railway
	Emergency Transport Route

Landslide (Special) Danger Zones	
Steep Land Collapse	
	Landslide Special Danger Zones
	Landslide Danger Zones
Mudslides	
	Landslide Special Danger Zones
	Landslide Danger Zones
Landslide	
	Landslide Danger Zones

