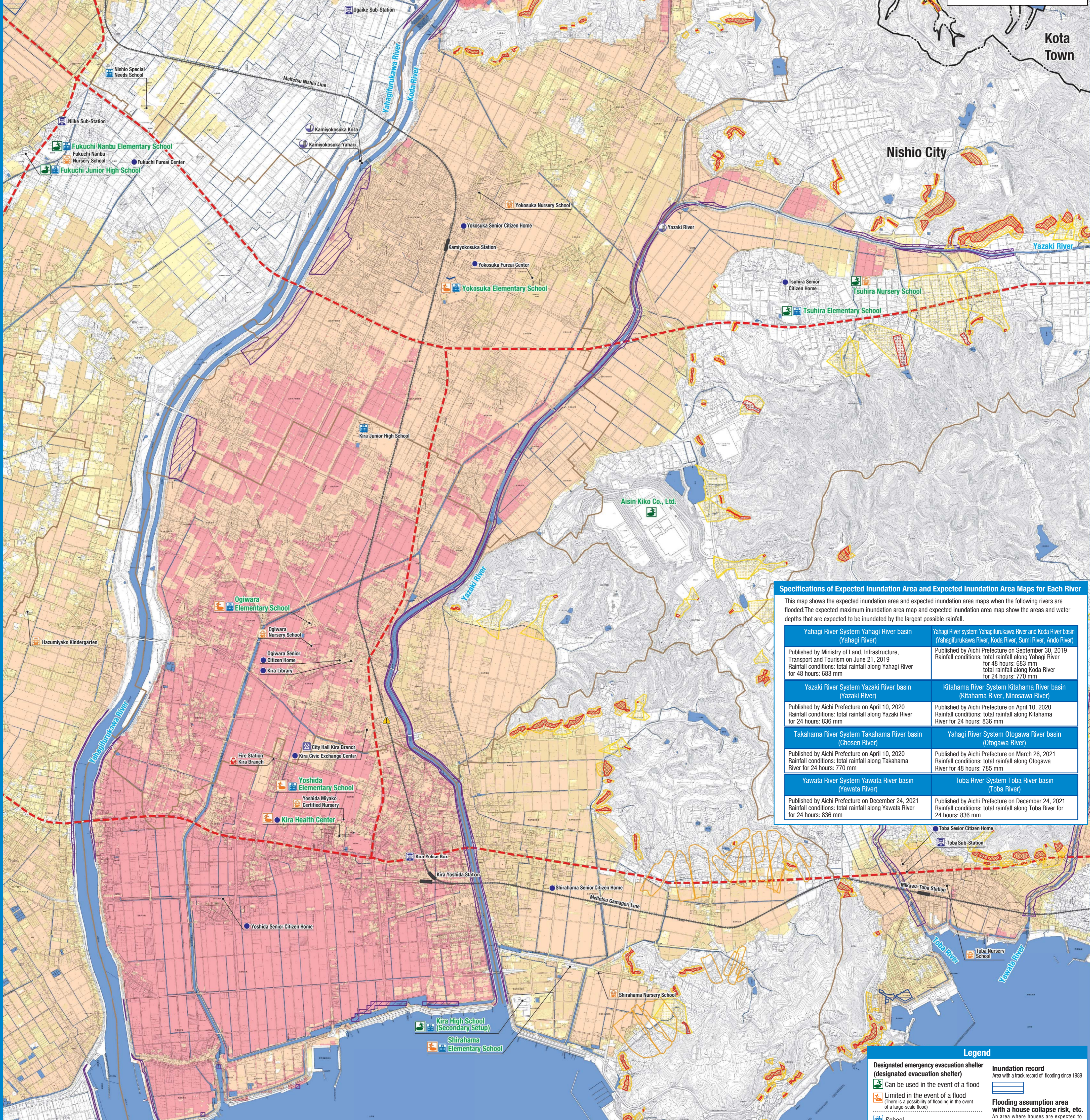
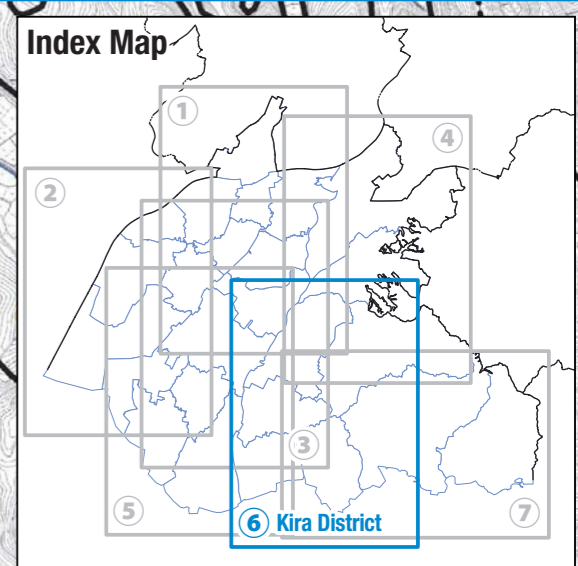


Flood Hazard Map

⑥ Kira District

Issued by: Nishio City River Harbor Section, Construction Department Phone: 0563-65-2151
Crisis Management Section, Crisis Management Bureau Phone: 0563-65-2137

Date issued: March 2023



Specifications of Expected Inundation Area and Expected Inundation Area Maps for Each River

This map shows the expected inundation area and expected inundation area maps when the following rivers are flooded. The expected maximum inundation area map and expected inundation area map show the areas and water depths that are expected to be inundated by the largest possible rainfall.

Yahagi River System Yahagi River basin (Yahagi River)	Yahagi River system Yahagifukukawa River and Koda River basin (Yahagifukukawa River, Koda River, Sumi River, Ando River)
Published by Ministry of Land, Infrastructure, Transport and Tourism on June 21, 2019 Rainfall conditions: total rainfall along Yahagi River for 48 hours: 683 mm	Published by Aichi Prefecture on September 30, 2019 Rainfall conditions: total rainfall along Yahagi River for 48 hours: 683 mm total rainfall along Koda River for 24 hours: 770 mm
Yazaki River System Yazaki River basin (Yazaki River)	Kitahama River System Kitahama River basin (Kitahama River, Ninosawa River)
Published by Aichi Prefecture on April 10, 2020 Rainfall conditions: total rainfall along Yazaki River for 24 hours: 836 mm	Published by Aichi Prefecture on April 10, 2020 Rainfall conditions: total rainfall along Kitahama River for 24 hours: 836 mm
Takahama River System Takahama River basin (Choson River)	Yahagi River System Otogawa River basin (Otogawa River)
Published by Aichi Prefecture on April 10, 2020 Rainfall conditions: total rainfall along Takahama River for 24 hours: 770 mm	Published by Aichi Prefecture on March 26, 2021 Rainfall conditions: total rainfall along Otogawa River for 48 hours: 785 mm
Yawata River System Yawata River basin (Yawata River)	Toba River System Toba River basin (Toba River)
Published by Aichi Prefecture on December 24, 2021 Rainfall conditions: total rainfall along Yawata River for 24 hours: 836 mm	Published by Aichi Prefecture on December 24, 2021 Rainfall conditions: total rainfall along Toba River for 24 hours: 836 mm

Designated emergency evacuation shelter (designated evacuation shelter) during floods

Elementary school district	District name (town name, etc.)	Designated emergency evacuation shelter (designated evacuation shelter)	
		Facility name	Phone number
Yoshida Elementary School District	Kiracho Ojima, Kiracho Yoshida	Yoshida Elementary School *2	32-0154
		Kira Health Center *1	32-3001
		Hazu Elementary School	62-2065
Shirahama Elementary School District	Kiracho Okkawa, Kiracho Oyamada, Kiracho Shirahama Shinden, Kiracho Tomiyoshi Shinden	Shirahama Elementary School *3	32-0155
Ogiwara Elementary School District	Kiracho Aiba	Ogiwara Elementary School *1	32-1053
		Fukuchi Junior High School	56-2466
		Fukuchi Hokubu Elementary School	57-2057
Yokosuka Elementary School District	Kiracho Okayama, Kiracho Kamiyokosuka, Kiracho Shimoyokosuka	Yokosuka Elementary School *1	35-0100
Tsuhiro Elementary School District	Kiracho Kida, Kiracho Komaki, Kiracho Sakai, Kiracho Seto, Kiracho Terajima, Kiracho Nakano	Tsuhiro Elementary School	35-0056
		Aisin Kiko Co., Ltd.	35-3855
		Tsuhiro Nursery School	35-0456

Only district names (town names, etc.) are listed where flooding and inundation is expected to occur.
*1 The first floor of the facilities (school buildings) and the gymnasiums may not be available in the event of a large-scale flood.
*2 The second floor and below of the facilities (school buildings) and the gymnasiums may not be available in the event of a large-scale flood.
*3 The gymnasiums may not be available in the event of a large-scale flood.

About This Map

The flood hazard map shows how much flooding may occur in which area when a river is flooded by heavy rain, and where facilities such as designated emergency evacuation shelters are located. The inundation area is only an assumption; in reality the inundation range may exceed the assumption and the inundation depth may increase. Check the level of risk of your area, school, or workplace on the hazard map, and make preparations to take appropriate evacuation measures in the event of a disaster.

About Evacuation

Nishio City is expected to be inundated over a wide area in the event of a flood caused by the largest level of rainfall. If a typhoon or heavy rain is forecast, consider measures such as evacuating to a relative or acquaintance's house in advance. If you cannot evacuate to a designated emergency evacuation shelter, take action to save your life by evacuating to a building with two or more floors located in an area outside the flooding assumption area with a house collapse risk, etc. with an inundation depth of less than 3 m. If you live in a flooding assumption area with a house collapse risk, etc. or an area with an inundation depth of 3 m or more, evacuate in advance.

Legend

- Designated emergency evacuation shelter (designated evacuation shelter)**
Area with a track record of flooding since 1989
Can be used in the event of a flood
- Limited in the event of a flood**
(There is a possibility of flooding in the event of a large-scale flood)
- School
- City Hall / Branch Office
- Police Station/Police Box/Sub-Station
- Fire Station
- Emergency Hospital
- Kindergarten / Nursery School
- Other Facilities
- Rainfall Observatory
- Water Level Measurement Site
- Underpass / Underground Passage
- City Boundary
- Railway
- Emergency Transport Route
- Elementary School District Boundary
- Landslide Danger Zones, etc.**
 - Landslide Special Danger Zones (Steep Land Collapse)
 - Landslide Danger Zones (Steep Land Collapse)
 - Landslide Special Danger Zones (Mudslides)
 - Landslide Danger Zones (Mudslides)
 - Landslide Danger Zones (Landslide)
- Inundation record**
Area with a track record of flooding since 1989
- Flooding assumption area with a house collapse risk, etc.**
An area where houses are expected to collapse or the ground is eroded due to the flow of water in the event of a flood.
- Expected Maximum Inundation Depth**
 - 10.0 m or above
 - 5.0 ~ 10.0 m
 - 3.0 ~ 5.0 m
 - 1.0 ~ 3.0 m
 - 0.5 ~ 1.0 m
 - 0.3 ~ 0.5 m
 - Less than 0.3 m