

Flood Hazard Map

① Nishio, Hananoki, Tsuruhiro, Yatsuomote, Nishinomachi and Yonezu Districts

Issued by: Nishio City River Harbor Section, Construction Department Phone: 0563-65-2151
Crisis Management Section, Crisis Management Bureau Phone: 0563-65-2137

Date issued: March 2023

About This Map

The flood hazard map shows how much flooding may occur in which area when a river is flooded by heavy rain, and where facilities such as designated emergency evacuation shelters are located. The inundation area is only an assumption; in reality the inundation range may exceed the assumption and the inundation depth may increase. Check the level of risk of your area, school, or workplace on the hazard map, and make preparations to take appropriate evacuation measures in the event of a disaster.

About Evacuation

Nishio City is expected to be inundated over a wide area in the event of a flood caused by the largest level of rainfall. If a typhoon or heavy rain is forecast, consider measures such as evacuating to a relative or acquaintance's house in advance. If you cannot evacuate to a designated emergency evacuation shelter, take action to save your life by evacuating to a building with two or more floors located in an area outside the flooding assumption area with a house collapse risk, etc. with an inundation depth of less than 3 m. If you live in a flooding assumption area with a house collapse risk, etc. or an area with an inundation depth of 3 m or more, evacuate in advance.

Specifications of Expected Inundation Area and Expected Inundation Area Maps for Each River

This map shows the expected inundation area and expected inundation area maps when the following rivers are flooded. The expected maximum inundation area map and expected inundation area map show the areas and water depths that are expected to be inundated by the largest possible rainfall.

Yahagi River System Yahagi River basin (Yahagi River) Published by Ministry of Land, Infrastructure, Transport and Tourism on June 21, 2019 Rainfall conditions: total rainfall along Yahagi River for 48 hours: 683 mm	Yahagi River system Yahagifurukawa River and Koda River basin (Yahagifurukawa River, Koda River, Sumi River, Ando River) Published by Aichi Prefecture on September 30, 2019 Rainfall conditions: total rainfall along Yahagi River for 48 hours: 683 mm total rainfall along Koda River for 24 hours: 770 mm
Yazaki River System Yazaki River basin (Yazaki River) Published by Aichi Prefecture on April 10, 2020 Rainfall conditions: total rainfall along Yazaki River for 24 hours: 836 mm	Kitahama River System Kitahama River basin (Kitahama River, Minosawa River) Published by Aichi Prefecture on April 10, 2020 Rainfall conditions: total rainfall along Kitahama River for 24 hours: 836 mm
Takahama River System Takahama River basin (Chosen River) Published by Aichi Prefecture on April 10, 2020 Rainfall conditions: total rainfall along Takahama River for 24 hours: 770 mm	Yahagi River System Otagawa River basin (Otagawa River) Published by Aichi Prefecture on March 26, 2021 Rainfall conditions: total rainfall along Otagawa River for 24 hours: 785 mm
Yawata River System Yawata River basin (Yawata River) Published by Aichi Prefecture on December 24, 2021 Rainfall conditions: total rainfall along Yawata River for 24 hours: 836 mm	Toba River System Toba River basin (Toba River) Published by Aichi Prefecture on December 24, 2021 Rainfall conditions: total rainfall along Toba River for 24 hours: 836 mm

Legend

Designated emergency evacuation shelter (designated evacuation shelter)

- Can be used in the event of a flood
- Limited in the event of a flood (There is a possibility of flooding in the event of a large-scale flood)

Other Facilities

- School
- City Hall / Branch Office
- Police Station/Police Box/Sub-Station
- Fire Station
- Emergency Hospital
- Kindergarten / Nursery School
- Other Facilities
- Rainfall Observatory
- Water Level Measurement Site
- Underpass / Underground Passage

City Boundary

- City Boundary
- Railway
- Emergency Transport Route
- Elementary School District Boundary

Landslide Danger Zones, etc.

- Landslide Special Danger Zones (Steep Land Collapse)
- Landslide Danger Zones (Steep Land Collapse)
- Landslide Special Danger Zones (Mudslides)
- Landslide Danger Zones (Mudslides)
- Landslide Danger Zones (Landslide)

Inundation record
Area with a track record of flooding since 1989

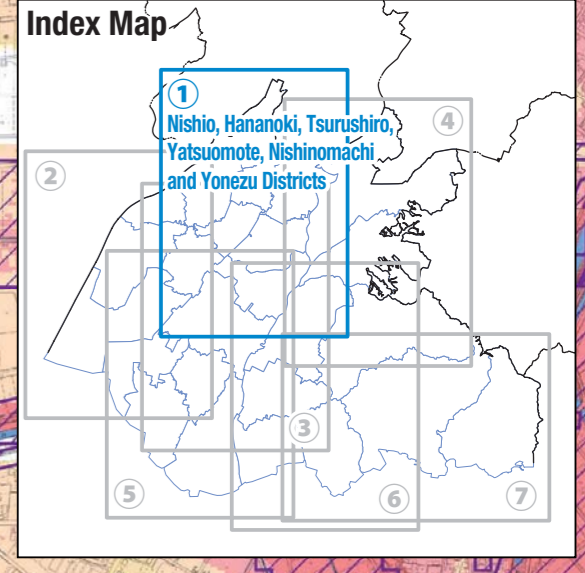
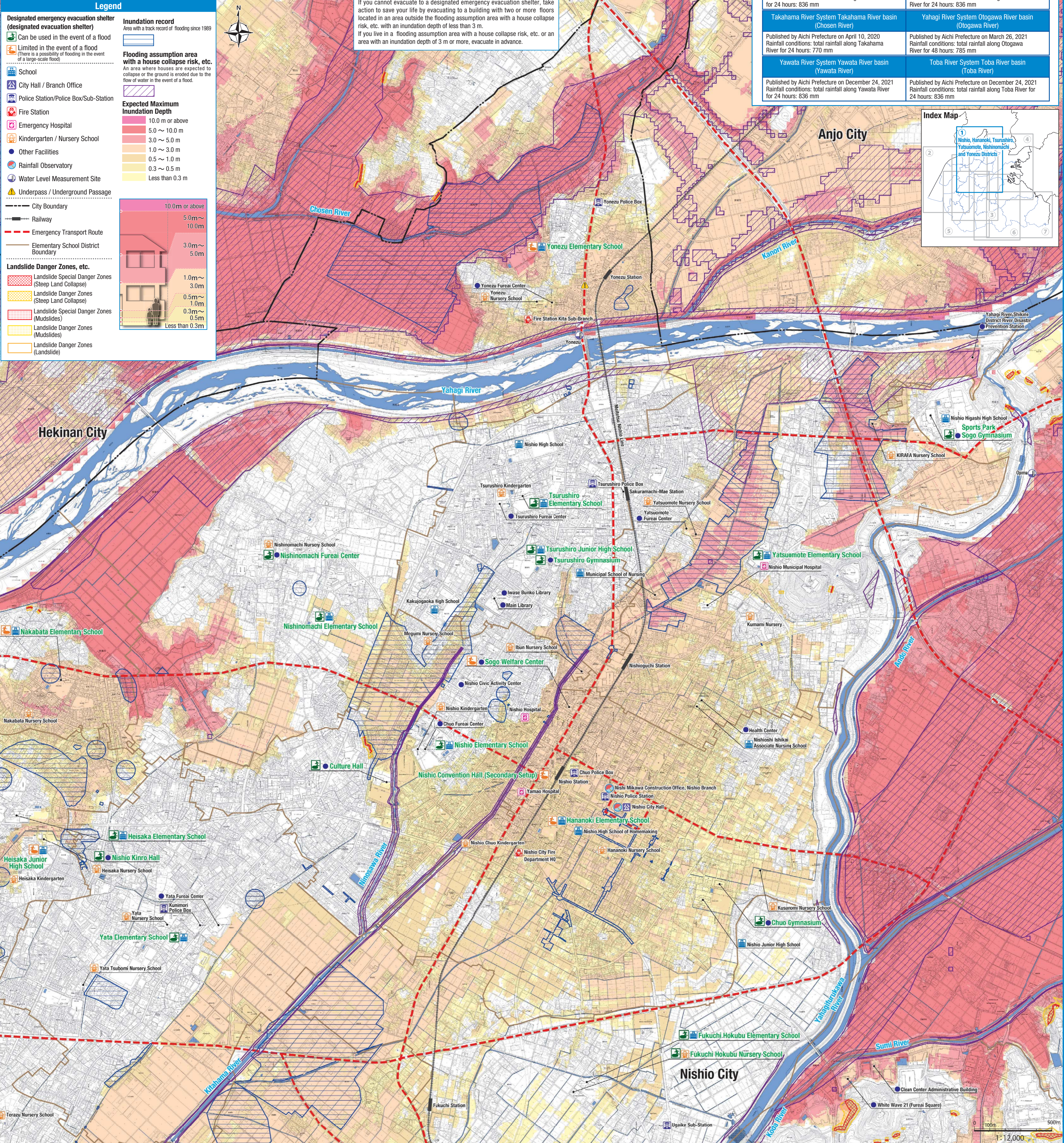
Flooding assumption area with a house collapse risk, etc.
An area where houses are expected to collapse or the ground is eroded due to the flow of water in the event of a flood.

Expected Maximum Inundation Depth

- 10.0 m or above
- 5.0 ~ 10.0 m
- 3.0 ~ 5.0 m
- 1.0 ~ 3.0 m
- 0.5 ~ 1.0 m
- 0.3 ~ 0.5 m
- Less than 0.3 m

Landslide Danger Zones, etc. (Depth)

- 10.0m or above
- 5.0m ~ 10.0m
- 3.0m ~ 5.0m
- 1.0m ~ 3.0m
- 0.5m ~ 1.0m
- 0.3m ~ 0.5m
- Less than 0.3m



Designated emergency evacuation shelter (designated evacuation shelter) during floods

Elementary school district	District name (town name, etc.)	Designated emergency evacuation shelter (designated evacuation shelter)	
		Facility name	Phone number
Nishio Elementary School District	Sudacho, Honmachi, Kinjocho, Aoicho, Shimomachi, Manzencho, Kaiseicho, Izumicho, Ibuncho, Yabacho, Suehirocho, Tsurumaicho, Tenjincho, Tsurugasakicho, Kamishitacho, 3 to 6-chome Eirakucho, Kitaasahimachi, Takasagocho, Minamiasahimachi, Azumacho	Nishio Elementary School	56-2266
	1 to 4-chome Nagayoshi, Yamashitacho, Sumisakicho, 1 to 6-chome Sumisaki	Culture Hall	54-5855
Hananoki Elementary School District	Takabatacho, Imagawacho (Imagawa Shinmachi)	Hananoki Elementary School *1	57-2658
	Nagayoshicho, Yazonecho	Sogo Welfare Center *1	56-5900
	Sakuragicho, Hananokicho, 1 to 2-chome Eirakucho, Wakamatsucho, Shiroasakicho, Sumiyoshicho, Yorizumicho (3rd and 4th Districts)	Chuo Gymnasium	55-0305
	Chodacho	Tsuruhiro Elementary School	57-5665
Tsuruhiro Elementary School District	Kamezawacho, Shinyashikicho, Miyamachi, Tsuruhirocho, Dokojocho, 1-chome Dokojo, Shindobacho, 2-chome Shindoba, Itocho	Tsuruhiro Elementary School	57-5665

Elementary school district	District name (town name, etc.)	Designated emergency evacuation shelter (designated evacuation shelter)	
		Facility name	Phone number
Yatsuomote Elementary School District	Kumamicho, Yatsuomotecho	Yatsuomote Elementary School	57-3014
	Yorizumicho (1st and 2nd Districts)	Tsuruhiro Junior High School	56-2258
Nishinomachi Elementary School District	Togasakicho, 1 to 2-chome Togasaki, 4 to 5-chome Togasaki	Sports Park Sogo Gymnasium	54-7761
	Nakaharacho, Shikoyacho, Shikinocho	Nishinomachi Elementary School	57-2257
Yonezu Elementary School District	Kamimachi, Omacho, Shimomachi, Hokojocho	Nishinomachi Fureai Center	57-7636
	Yonezucho, Minaminakanecho	Yonezu Elementary School *2	57-3457
Tsuruhiro Elementary School District		Tsuruhiro Gymnasium	57-0168
		Tsuruhiro Junior High School	57-2258

Only district names (town names, etc.) are listed where flooding and inundation is expected to occur.
 *1 The first floor of the facilities (school buildings) and the gymnasiums may not be available in the event of a large-scale flood.
 *2 The second floor and below of the facilities (school buildings) and the gymnasiums may not be available in the event of a large-scale flood.