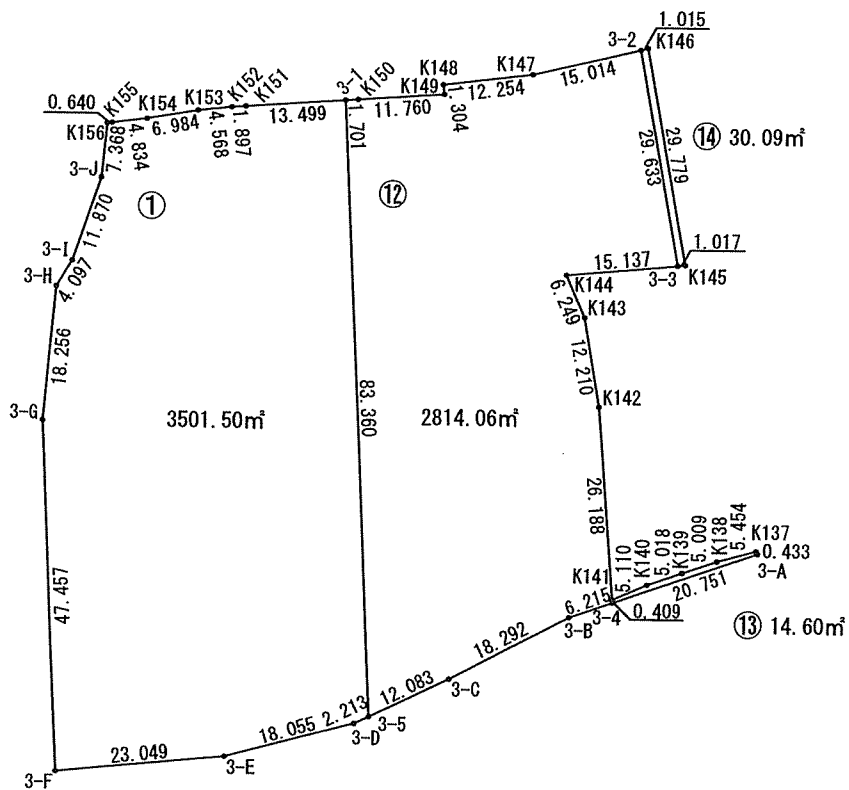
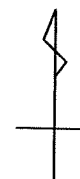


# 画地確定原子一覽表

画地面積 6360.26 m<sup>2</sup>



S=1:1000

街区番号 3

令和 6 年 9 月

## 面積 ( 座標法 ) 計算書

地番：3街区

測点名	[1] X(i)	[2] X(i+1)-X(i-1)	[3] Y(i)	[4] Y(i+1)-Y(i-1)	[2]*[3]	[1]*[4]	方向角	夾角	距離
K146	-126789.597	25.497	-13401.345	-20.935	-341694.093465	2654340.213195	256-18-16	86-40-40	16.029
K147	-126793.392	-5.361	-13416.918	-27.727	71928.097398	3515600.379984	262-39-29	186-21-13	12.254
K148	-126794.958	-2.857	-13429.072	-11.972	38366.858704	1517989.237176	171-58-32	89-19-03	1.304
K149	-126796.249	-2.167	-13428.890	-11.545	29100.404630	1463862.694705	265-43-41	273-45-09	11.760
K150	-126797.125	-2.007	-13440.617	-26.885	26975.318319	3408940.705625	265-43-58	180-00-17	15.200
K151	-126798.256	-1.272	-13455.775	-17.050	17115.745800	2161910.264800	265-44-17	180-00-19	1.897
K152	-126798.397	-0.637	-13457.667	-6.433	8572.533879	815694.087901	263-45-59	178-01-42	4.568
K153	-126798.893	-1.729	-13462.208	-11.415	23276.157632	1447409.363595	259-49-51	176-03-52	6.984
K154	-126800.126	-1.842	-13469.082	-11.669	24810.049044	1479630.670294	262-45-42	182-55-51	4.834
K155	-126800.735	-0.690	-13473.877	-5.430	9296.975130	688527.991050	262-43-50	179-58-08	0.640
K156	-126800.816	-7.414	-13474.512	-1.353	99900.031968	171561.504048	185-35-32	102-51-42	7.368
3-J	-126808.149	-18.565	-13475.230	-4.558	250167.644950	577991.543142	198-52-28	193-16-56	11.870
3-I	-126819.381	-14.705	-13479.070	-6.013	198209.724350	762564.937953	212-02-01	193-09-33	4.097
3-H	-126822.854	-21.651	-13481.243	-3.863	291882.392193	489916.685002	185-18-41	153-16-40	18.256
3-G	-126841.032	-65.579	-13482.933	0.618	884197.263207	-78387.757776	177-12-45	171-54-04	47.457
3-F	-126888.433	-45.137	-13480.625	25.246	608474.970625	-3203425.379518	84-21-47	87-09-02	23.049
3-E	-126886.169	6.963	-13457.687	40.371	-93705.874581	-5122521.528699	74-54-53	170-33-06	18.055
3-D	-126881.470	10.882	-13440.254	30.322	-146256.844028	-3847299.933340	64-22-21	169-27-28	14.295
3-C	-126875.287	14.725	-13427.365	29.064	-197717.949625	-3687503.341368	62-09-41	177-47-20	18.292
3-B	-126866.745	17.434	-13411.190	41.633	-233810.686460	-5281843.194585	70-44-48	188-35-07	26.966
3-A	-126857.853	9.268	-13385.732	25.244	-124058.964176	-3202399.641132	330-21-13	79-36-25	0.433
K137	-126857.477	-1.056	-13385.946	-5.477	14135.558976	694798.401529	254-46-44	104-25-31	5.454
K138	-126858.909	-3.067	-13391.209	-9.998	41070.838003	1268335.372182	250-57-01	176-10-17	5.009
K139	-126860.544	-3.318	-13395.944	-9.462	44447.742192	1200354.467328	250-24-08	179-27-07	5.018
K140	-126862.227	-3.744	-13400.671	-9.403	50172.112224	1192885.520481	246-12-50	175-48-42	5.110
K141	-126864.288	24.041	-13405.347	-6.797	-322277.947227	862296.565536	355-21-16	289-08-26	26.188
K142	-126838.186	38.131	-13407.468	-4.214	-511240.162308	534496.115804	350-07-46	174-46-30	12.210
K143	-126826.157	17.755	-13409.561	-4.595	-238086.755555	582766.191415	336-23-49	166-16-03	6.249
K144	-126820.431	7.268	-13412.063	13.578	-97478.873884	-1721967.812118	84-31-20	288-07-31	16.154
K145	-126818.889	30.834	-13395.983	10.718	-413051.739822	-1359244.852302	349-37-36	85-06-16	29.779
合計				倍面積	12720.528093	-12720.528093			376.779
				面積	6360.2640465	6360.2640465			
				地積	6360.26	6360.26			

## 面積 ( 座標法 ) 計算書

地番：3-1

測点名	[1] X(i)	[2] X(i+1)-X(i-1)	[3] Y(i)	[4] Y(i+1)-Y(i-1)	[2]*[3]	[1]*[4]	方向角	夾角	距離
3-G	-126841.032	-65.579	-13482.933	0.618	884197.263207	-78387.757776	177-12-45	171-54-04	47.457
3-F	-126888.433	-45.137	-13480.625	25.246	608474.970625	-3203425.379518	84-21-47	87-09-02	23.049
3-E	-126886.169	6.963	-13457.687	40.371	-93705.874581	-5122521.528699	74-54-53	170-33-06	18.055
3-D	-126881.470	5.656	-13440.254	19.428	-76018.076624	-2465053.199160	64-22-23	169-27-30	2.213
3-5	-126880.513	84.218	-13438.259	-2.059	-1131743.296462	261246.976267	357-12-45	112-50-22	83.360
3-1	-126797.252	82.257	-13442.313	-17.516	-1105724.340441	2220980.666032	265-44-05	88-31-20	13.499
K151	-126798.256	-1.145	-13455.775	-15.354	15406.862375	1946860.422624	265-44-17	180-00-12	1.897
K152	-126798.397	-0.637	-13457.667	-6.433	8572.533879	815694.087901	263-45-59	178-01-42	4.568
K153	-126798.893	-1.729	-13462.208	-11.415	23276.157632	1447409.363595	259-49-51	176-03-52	6.984
K154	-126800.126	-1.842	-13469.082	-11.669	24810.049044	1479630.670294	262-45-42	182-55-51	4.834
K155	-126800.735	-0.690	-13473.877	-5.430	9296.975130	688527.991050	262-43-50	179-58-08	0.640
K156	-126800.816	-7.414	-13474.512	-1.353	99900.031968	171561.504048	185-35-32	102-51-42	7.368
3-J	-126808.149	-18.565	-13475.230	-4.558	250167.644950	577991.543142	198-52-28	193-16-56	11.870
3-I	-126819.381	-14.705	-13479.070	-6.013	198209.724350	762564.937953	212-02-01	193-09-33	4.097
3-H	-126822.854	-21.651	-13481.243	-3.863	291882.392193	489916.685002	185-18-41	153-16-40	18.256
合計				倍面積	7003.017245	-7003.017245			248.147
				面積	3501.5086225	3501.5086225			
				地積	3501.50	3501.50			

## 面積 ( 座標法 ) 計算書

地番 : 3-12

測点名	[1] X(i)	[2] X(i+1)-X(i-1)	[3] Y(i)	[4] Y(i+1)-Y(i-1)	[2]*[3]	[1]*[4]	方向角	夾角	距離
3-2	-126789.837	25.594	-13402.331	-19.923	-343019.259614	2526033.922551	256-18-12	86-40-37	15.014
K147	-126793.392	-5.121	-13416.918	-26.741	68708.037078	3390582.095472	262-39-29	186-21-17	12.254
K148	-126794.958	-2.857	-13429.072	-11.972	38366.858704	1517989.237176	171-58-32	89-19-03	1.304
K149	-126796.249	-2.167	-13428.890	-11.545	29100.404630	1463862.694705	265-43-41	273-45-09	11.760
K150	-126797.125	-1.003	-13440.617	-13.423	13480.938851	1701997.808875	265-43-03	179-59-22	1.701
3-1	-126797.252	-83.388	-13442.313	2.358	1120927.596444	-298987.920216	177-12-45	91-29-42	83.360
3-5	-126880.513	-78.035	-13438.259	14.948	1048654.541065	-1896609.908324	64-22-20	67-09-35	12.083
3-C	-126875.287	13.768	-13427.365	27.069	-184867.961320	-3434387.143803	62-09-41	177-47-21	18.292
3-B	-126866.745	10.591	-13411.190	22.043	-142037.913290	-2796523.660035	70-45-06	188-35-25	6.215
3-4	-126864.696	2.457	-13405.322	5.843	-32936.876154	-741270.418728	356-29-37	105-44-31	0.409
K141	-126864.288	26.510	-13405.347	-2.146	-355375.748970	272250.762048	355-21-16	178-51-39	26.188
K142	-126838.186	38.131	-13407.468	-4.214	-511240.162308	534496.115804	350-07-46	174-46-30	12.210
K143	-126826.157	17.755	-13409.561	-4.595	-238086.755555	582766.191415	336-23-49	166-16-03	6.249
K144	-126820.431	7.171	-13412.063	12.566	-96177.903773	-1593625.535946	84-31-20	288-07-31	15.137
3-3	-126818.986	30.594	-13396.995	9.732	-409867.665030	-1234202.371752	349-37-35	85-06-15	29.633
合計				倍面積	5628.130758	-5628.130758			251.809
				面積	2814.0653790	2814.0653790			
				地積	2814.06	2814.06			

## 面積 ( 座標法 ) 計算書

地番 : 3-13

測点名	[1] X(i)	[2] X(i+1)-X(i-1)	[3] Y(i)	[4] Y(i+1)-Y(i-1)	[2]*[3]	[1]*[4]	方向角	夾角	距離
K137	-126857.477	-1.056	-13385.946	-5.477	14135.558976	694798.401529	254-46-44	104-25-31	5.454
K138	-126858.909	-3.067	-13391.209	-9.998	41070.838003	1268335.372182	250-57-01	176-10-17	5.009
K139	-126860.544	-3.318	-13395.944	-9.462	44447.742192	1200354.467328	250-24-08	179-27-07	5.018
K140	-126862.227	-3.744	-13400.671	-9.403	50172.112224	1192885.520481	246-12-50	175-48-42	5.110
K141	-126864.288	-2.469	-13405.347	-4.651	33097.801743	590045.803488	176-29-37	110-16-47	0.409
3-4	-126864.696	6.435	-13405.322	19.615	-86263.247070	-2488451.012040	70-44-42	74-15-05	20.751
3-A	-126857.853	7.219	-13385.732	19.376	-96631.599308	-2457997.759728	330-21-13	79-36-31	0.433
合計				倍面積	29.206760	-29.206760			42.184
				面積	14.6033800	14.6033800			
				地積	14.60	14.60			

## 面積 ( 座標法 ) 計算書

地番 : 3-14

測点名	[1] X(i)	[2] X(i+1)-X(i-1)	[3] Y(i)	[4] Y(i+1)-Y(i-1)	[2]*[3]	[1]*[4]	方向角	夾角	距離
K145	-126818.889	29.389	-13395.983	-4.350	-393694.544387	551662.167150	349-37-36	85-06-06	29.779
K146	-126789.597	29.052	-13401.345	-6.348	-389335.874940	804860.361756	256-19-11	86-41-35	1.015
3-2	-126789.837	-29.389	-13402.331	4.350	393881.105759	-551535.790950	169-37-35	93-18-24	29.633
3-3	-126818.986	-29.052	-13396.995	6.348	389209.498740	-805046.923128	84-31-30	94-53-55	1.017
合計				倍面積	60.185172	-60.185172			61.444
				面積	30.0925860	30.0925860			
				地積	30.09	30.09			