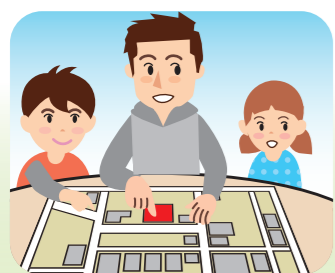


How to use hazard maps

Check the level of risk of your home, school or office on the hazard map, and make arrangements to facilitate appropriate evacuation measures in the event of a disaster.

1 Check home location and evacuation destination



2 Check inundation range of tsunami



3 Check evacuation route

※Check by actually walking.



4 Keep ready the things to be taken out during evacuation if you feel vibrations.



Transmission route for tsunami-related information

If forecast suggests the occurrence of a tsunami, Japan Meteorological Agency (JMA) and Nishio City will transmit information through a wireless-activated disaster warning system and Nishio City's disaster prevention application.

Japan Meteorological Agency (JMA), Nishio City Office, etc.

- Major tsunami warnings, Tsunami warnings or advisories (Ise Bay and Mikawa Bay)
- Special information about Nankai megathrust earthquake
- Evacuation information (Evacuation instructions)

- Wireless-activated disaster warning system
- Disaster prevention application/ disaster prevention e-mails by Nishio City
- Emergency early warning e-mails (Area e-mails)
- Website/Twitter/Facebook
- Publicity using the city's PR vehicle and through fire department
- Reports (TV, radio, etc.)

All citizens

※There are also other means of conveying the information. You can use the means of acquiring information that suits you.

Source of information

At the critical moment, pro-actively acquire weather information and evacuation information from TV, radio and Internet. The information about evacuation facilities such as temporary tsunami shelters listed on the hazard map may be changed since it was created. Check the latest information on the disaster prevention application or the website of Nishio City.

About Nishio City's disaster prevention application

On this app, you can check the content broadcast through wireless-activated disaster warning system, designated evacuation shelters, hazard map and other related information.

It is available for download and use free of cost.

Scan the QR code to download the application on your current smartphone.

For iPhone users



For Android users



※If you cannot install the app, you can check the content broadcast on the wireless-activated disaster warning system by one of the following methods.

1 Disaster prevention e-mails by Nishio City

[E-mail address for registration]
bousai.nishio-city2@raidenn2.ktaiwork.jp

You can register by scanning the QR code or by directly entering the e-mail address for registration and sending a blank e-mail (no subject or body required).

※Communication expenses will be self-borne.

※Configure the settings so that you can receive the above address.

[QR code for registration]



2 Telephone service for wireless-activated disaster warning system

Call the following number to check the content broadcast on the wireless-activated disaster warning system.

☎ 0120-96-8111 (Toll-free)

3 Nishio City's official LINE account

Add friends and receive disaster prevention information.

[QR code for registration]



【Register by searching ①】

Search **Nishio City** from "official account tab" on LINE application

【Register by searching ②】

Select "Search ID" under "Add Friends" and input the ID **@nishiocity** in Search

Other sources of information

Nishio City website

Evacuation information, details of designated evacuation shelters, evacuation plan during Tsunami, etc.
<https://www.city.nishio.aichi.jp/>



Aichi Prefecture Disaster Prevention and Safety Bureau

Information about disasters and disaster history in the prefecture
<https://www.pref.aichi.jp/bousai/>



Japan Meteorological Agency (JMA)

Explanations about weather information and warnings (Major tsunami warning, etc.)
<http://www.jma.go.jp/jma/>



About emergency early warning e-mails (Area e-mails)

The services of telecommunications carriers (NTT DoCoMo, Softbank, au, Y!mobile *) are used to distribute information to people staying in the city.

*Only Y!mobile excludes disaster or evacuation information

*Some models are not applicable

What to do when you sense the Earthquake Early Warning (EEW)

Earthquake Early Warning (EEW) is an information that predicts the arrival time and seismic intensity of intense vibrations in various places and that is transfers as soon as possible. This information is disseminated through TV, radio or wireless-activated disaster warning system. The information may not reach the places near the hypocenter on time.

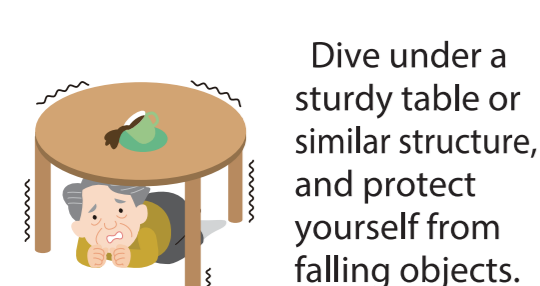
Indoors...

- Dive under the table and protect your head.
- Do not rush towards the exit. Calm down and then evacuate.
- Use the stairs and not the elevator for evacuation.

Outdoors...

- Be careful of falling objects and collapsing structures.
- Do not enter narrow lanes.
- Enter strong buildings rather than staying on the roads.

When inside the house



Dive under a sturdy table or similar structure, and protect yourself from falling objects.

When driving a vehicle



Instead of stopping abruptly, gradually slow down, and bring the vehicle on the left side of the road, and turn off the engine.

When using transportation facilities



Protect your head with your briefcase or similar object. To avoid falling on the railway track, crouch down and hold on to a fixed object.

When inside the school



In the classroom, dive under the desks and protect yourself from falling objects.

When near a coast or estuary



When the vibrations subside, escape the tsunami danger zone or evacuate to a temporary tsunami shelter.

When walking on the street



Be careful of falling objects such as shattered window panes from buildings, and billboards, and protect your head with objects such as your belongings.

When near a mountain or a cliff...



Watch out for rockfalls and landslides.

When in a crowded facility...



Follow the instructions provided by the person in charge. Do not rush toward the exit.

When in an elevator...



Press the buttons for all floors to stop and get off immediately.

Normal arrangements

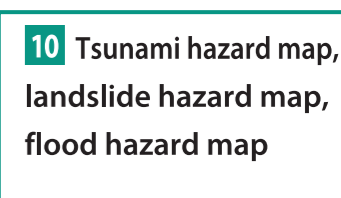
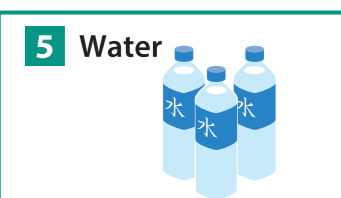
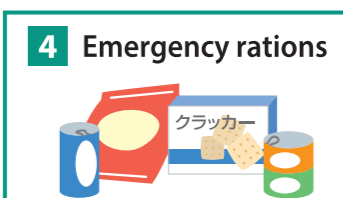
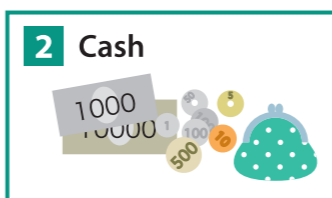
In normal times, arrange emergency evacuation items and stockpiles, and check the expiration date of the stockpiles. Discuss the level of risk of your home and living area with your family and colleagues, check the evacuation methods and routes, and make a list of meeting places, contact information, etc.

Remember when selecting the evacuation route

In the case of a tsunami, because you will be evacuated after the earthquake, avoid concrete-block walls and bridges that may collapse, steep slopes (landslide danger zones, etc.), areas near the sea and rivers, and underpasses as much as possible. Also, check by actually walking in a normal situation.

Examples of emergency evacuation items

※Arrange as per the familial situation.

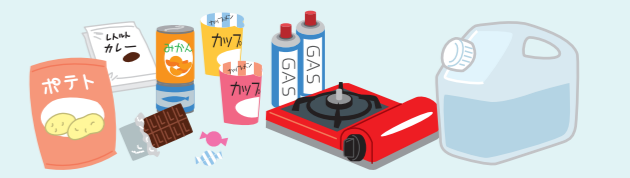


In the rucksack!



Stockpiles

Supplies may take some time to reach your hands. Store reserves of water and emergency rations for about a week.



Family refuge place

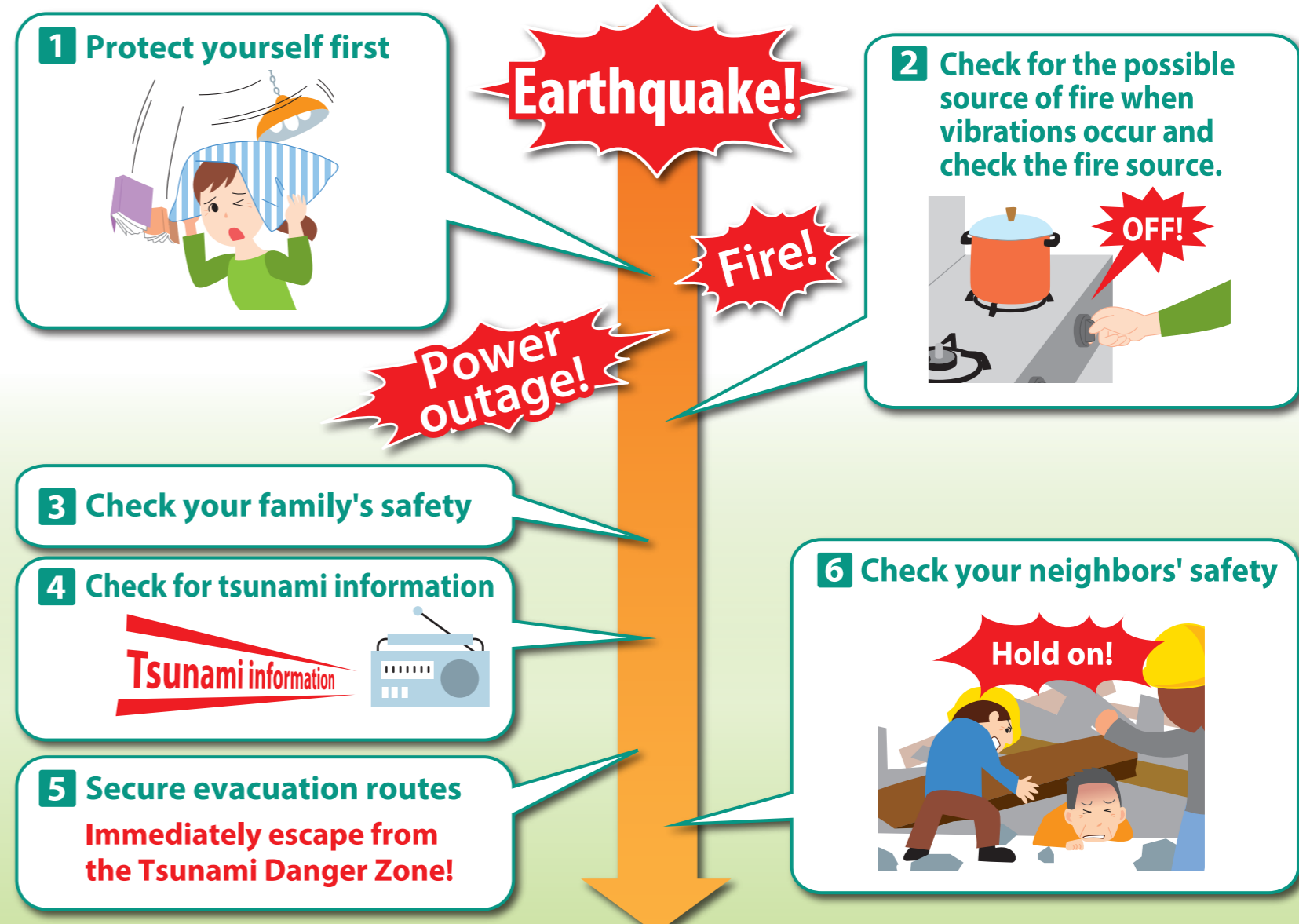
Type of disaster	Evacuation destination
Earthquake/tsunami	
Earthquake (No tsunami)	

Point of contact for family

Surname	Point of contact at company or school	Telephone number/E-mail address	Mobile number	Blood group
				type
				type
				type
				type
				type
				type

Actions to be taken in the event of earthquake

Think that the occurrence of earthquake is not an occasional phenomenon, but a regular one.



※Devise your own action plan based on the above-mentioned points.

Guidelines for evacuation during tsunami

- As a general rule, evacuate to a shelter outside the Tsunami Danger Zone. Evacuate as soon as the earthquake vibrations subside.
- Evacuate to temporary tsunami shelters only when it is difficult to evacuate to a distant place due to physical disabilities. Check the map for temporary tsunami shelters. Note that temporary tsunami shelters are places to protect you from the tsunami in an emergency situation, and not a place to live in evacuation for a long time.

※For the latest information on temporary tsunami shelters, see the Nishio City disaster prevention app and website.

- If you are near at the sea, distance yourself from it as soon as the earthquake subsides.
- Avoid going to the coast or estuaries after an earthquake, and obtain information about the tsunami from the TV, radio, or the Internet.



Local cooperation is important!



Evacuation on foot!



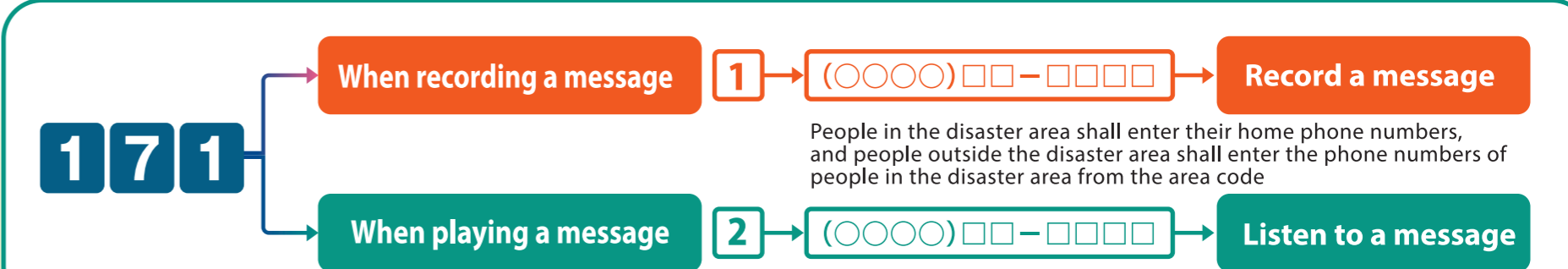
Do not approach coasts and rivers.



Do not return on your own judgment.

Disaster message dial

It is a "voice message board system" that can be used when communicating to the disaster area and congested due to the occurrence of disaster, but connecting is difficult.



A side from it, there is a "Disaster Message Board" on your mobile phones and smartphones. The methods recording the messages and other settings may be differ depending on the mobile company or model of your phone. Check these on advance.