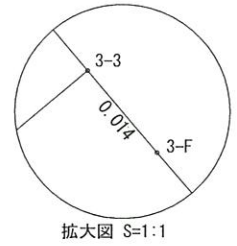
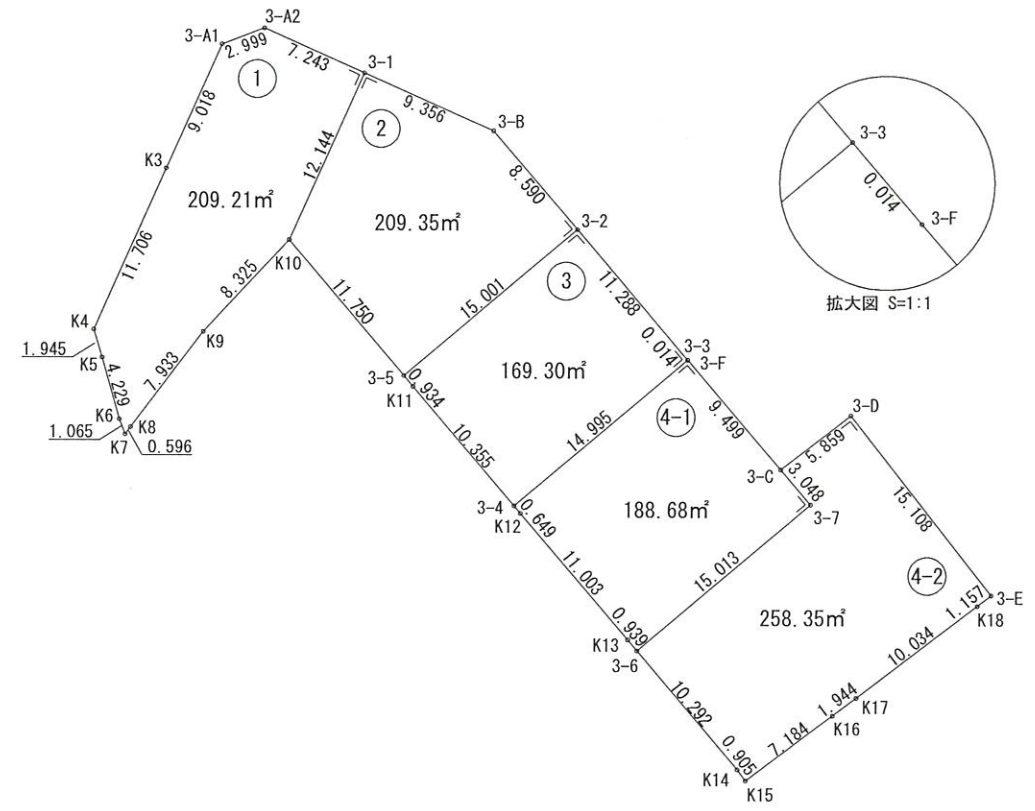
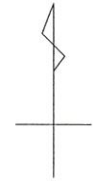


# 画地確定原子一覽表

画地面積	1034.94 m <sup>2</sup>
------	------------------------



S=1:500
街区番号 3

## 地区界面積（座標法）計算書

画地番号： 3\_1

測点名	[1] X(i)	[2] X(i+1)-X(i-1)	[3] Y(i)	[4] Y(i+1)-Y(i-1)	[2]*[3]	[1]*[4]	方向角	夾角	距離
3-A2	-126962.899	1.885	-13083.236	-9.418	-24661.899860	1195736.582782	249-10-40	135-08-09	2.999
3-A1	-126963.965	-9.300	-13086.039	-6.481	121700.162700	822853.457165	204-04-10	134-53-30	9.018
K3	-126972.199	-18.922	-13089.717	-8.453	247683.625074	1073295.998147	204-04-24	180-00-14	11.706
K4	-126982.887	-12.553	-13094.492	-4.222	164375.158076	536121.748914	163-29-03	139-24-39	1.945
HK5	-126984.752	-5.935	-13093.939	1.700	77712.527965	-215874.078400	164-15-40	180-46-37	4.229
K6	-126988.822	-5.064	-13092.792	1.529	66301.898688	-194165.908838	158-58-41	174-43-01	1.065
K7	-126989.816	-0.519	-13092.410	0.742	6794.960790	-94226.443472	37-09-30	58-10-49	0.596
K8	-126989.341	6.796	-13092.050	5.154	-88973.571800	-654503.063514	37-10-39	180-01-09	7.933
K9	-126983.020	12.401	-13087.256	10.481	-162295.061656	-1330909.032620	43-05-14	185-54-35	8.325
K10	-126976.940	17.170	-13081.569	10.635	-224610.539730	-1350399.756900	24-02-42	160-57-28	12.144
3-1	-126965.850	14.041	-13076.621	-1.667	-183608.835461	211652.071950	294-02-31	89-59-49	7.243
合計				倍面積	418.424786	-418.424786			67.203
				面積	209.2123930	209.2123930			
				地積	209.21	209.21			

### 画地面積（座標法）計算書

画地番号： 3\_2

測点名	[1] X(i)	[2] X(i+1)-X(i-1)	[3] Y(i)	[4] Y(i+1)-Y(i-1)	[2]*[3]	[1]*[4]	方向角	夾角	距離
3-1	-126965.850	-7.278	-13076.621	-13.492	95171.647638	1713023.248200	204-02-42	90-00-02	12.144
K10	-126976.940	-20.059	-13081.569	2.642	262403.192571	-335473.075480	139-45-38	115-42-56	11.750
3-5	-126985.909	0.721	-13073.979	19.041	-9426.338859	-2417938.693269	49-45-42	90-00-04	15.001
3-2	-126976.219	16.247	-13062.528	5.902	-212226.892416	-749413.644538	319-45-35	89-59-53	8.590
3-B	-126969.662	10.369	-13068.077	-14.093	-135502.890413	1789383.446566	294-02-40	154-17-05	9.356
合計				倍面積	418.718521	-418.718521			56.841
				面積	209.3592605	209.3592605			
				地積	209.35	209.35			

### 画地面積（座標法）計算書

画地番号： 3\_3

測点名	[1] X(i)	[2] X(i+1)-X(i-1)	[3] Y(i)	[4] Y(i+1)-Y(i-1)	[2]*[3]	[1]*[4]	方向角	夾角	距離
3-4	-126994.523	1.786	-13066.682	18.139	-23337.094052	-2303553.652697	49-45-29	90-01-35	14.995
3-3	-126984.836	18.304	-13055.236	4.154	-238963.039744	-527495.008744	319-45-39	90-00-10	11.288
3-2	-126976.219	-1.073	-13062.528	-18.743	14016.092544	2379915.272717	229-45-42	90-00-03	15.001
3-5	-126985.909	-10.403	-13073.979	-10.847	136008.603537	1377416.154923	139-43-52	89-58-10	0.934
K11	-126986.622	-8.614	-13073.375	7.297	112614.052250	-926621.380734	139-43-54	180-00-02	10.355
合計				倍面積	338.614535	-338.614535			52.573
				面積	169.3072675	169.3072675			
				地積	169.30	169.30			

## 画地面積（座標法）計算書

画地番号： 3\_4-1

測点名	[1] X(i)	[2] X(i+1)-X(i-1)	[3] Y(i)	[4] Y(i+1)-Y(i-1)	[2]*[3]	[1]*[4]	方向角	夾角	距離
3-6	-127004.130	9.003	-13058.545	12.048	-117566.080635	-1530145.758240	49-39-07	89-51-22	15.013
3-7	-126994.410	12.043	-13047.103	9.468	-157126.261429	-1202383.073880	319-38-36	89-59-29	3.048
3-C	-126992.087	9.563	-13049.077	-8.124	-124788.323351	1031683.714788	319-39-14	180-00-38	9.499
3-F	-126984.847	7.251	-13055.227	-6.159	-94663.450977	782099.672673	320-42-38	181-03-24	0.014
3-3	-126984.836	-9.676	-13055.236	-11.455	126322.463536	1454611.296380	229-45-29	89-02-51	14.995
3-4	-126994.523	-10.182	-13066.682	-11.027	133044.956124	1400368.605121	139-45-12	89-59-43	0.649
K12	-126995.018	-8.890	-13066.263	7.531	116159.078070	-956399.480558	139-43-47	179-58-35	11.003
K13	-127003.413	-9.112	-13059.151	7.718	118994.983912	-980212.341534	139-47-45	180-03-58	0.939
合計				倍面積	377.365250	-377.365250			55.160
				面積	188.6826250	188.6826250			
				地積	188.68	188.68			

## 画地面積（座標法）計算書

画地番号： 3\_4-2

測点名	[1] X(i)	[2] X(i+1)-X(i-1)	[3] Y(i)	[4] Y(i+1)-Y(i-1)	[2]*[3]	[1]*[4]	方向角	夾角	距離
3-E	-127000.422	12.640	-13035.180	-8.357	-164764.675200	1061342.526654	322-09-06	90-01-20	15.108
3-D	-126988.492	8.335	-13044.450	-13.897	-108725.490750	1764759.073324	232-09-15	90-00-09	5.859
3-C	-126992.087	-5.918	-13049.077	-2.653	77224.437686	336910.006811	139-38-36	87-29-21	3.048
3-7	-126994.410	-12.043	-13047.103	-9.468	157126.261429	1202383.073880	229-39-07	270-00-31	15.013
3-6	-127004.130	-17.578	-13058.545	-4.796	229543.104010	609111.807480	139-46-36	90-07-29	10.292
K14	-127011.988	-8.584	-13051.899	7.186	112037.501016	-912708.145768	143-21-29	183-34-53	0.905
K15	-127012.714	3.593	-13051.359	6.281	-46893.532887	-797766.856634	53-02-44	89-41-15	7.184
K16	-127008.395	5.483	-13045.618	7.298	-71529.123494	-926907.266710	53-13-07	180-10-23	1.944
K17	-127007.231	7.263	-13044.061	9.525	-94739.015043	-1209743.875275	52-34-06	179-20-59	10.034
K18	-127001.132	6.809	-13036.093	8.881	-88762.757237	-1127897.053292	52-07-46	179-33-40	1.157
合計				倍面積	516.709530	-516.709530			70.544
				面積	258.3547650	258.3547650			
				地積	258.35	258.35			