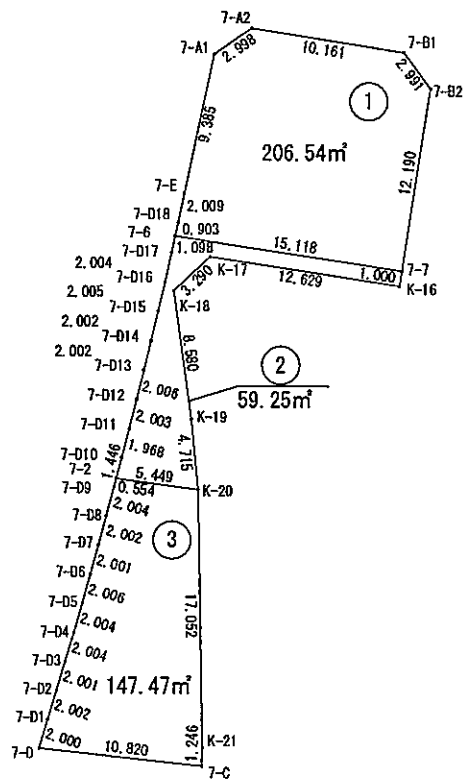


画地確定原子一覽表

画地面積 413.26 m²



S=1:500

街区番号 7

平成 29 年 11 月

画地面積（座標法）計算書

画地番号： 7_1

測点名	[1] X(i)	[2] X(i+1)-X(i-1)	[3] Y(i)	[4] Y(i+1)-Y(i-1)	[2]*[3]	[1]*[4]	方向角	夾角	距離
7-B2	-126496.322	14.462	-12874.092	0.107	-186185.118504	-13535.106454	323-52-52	135-03-25	2.991
7-B1	-126493.906	3.980	-12875.855	-11.803	-51245.902900	1493007.572518	278-51-15	134-58-23	10.161
7-A2	-126492.342	-0.136	-12885.895	-12.509	1752.481720	1582292.706078	235-27-04	136-35-49	2.998
7-A1	-126494.042	-10.884	-12888.364	-4.401	140276.953776	556700.278842	191-52-47	136-25-43	9.385
7-E	-126503.226	-11.149	-12890.296	-2.349	143713.910104	297156.077874	191-58-52	180-06-05	2.009
7-D18	-126505.191	-2.847	-12890.713	-0.609	36699.859911	77041.661319	192-16-51	180-17-59	0.903
7-6	-126506.073	-3.177	-12890.905	14.751	40954.405185	-1866091.082823	98-43-53	86-27-02	15.118
7-7	-126508.368	9.751	-12875.962	16.813	-125553.505462	-2126985.191184	8-49-27	90-05-34	12.190
合計					倍面積 面積 地積	413.083830 -413.083830 206.54 206.54 206.54			55.755

画地面積（座標法）計算書

画地番号： 7_2

測点名	[1] X(i)	[2] X(i+1)-X(i-1)	[3] Y(i)	[4] Y(i+1)-Y(i-1)	[2]*[3]	[1]*[4]	方向角	夾角	距離
7-7	-126508.368	3.283	-12875.962	-14.789	-42271.783246	1870932.254352	278-43-53	89-52-19	15.118
7-6	-126506.073	1.222	-12890.905	-15.175	-15752.685910	1919729.657775	192-12-02	93-28-09	1.098
7-D17	-126507.146	-3.030	-12891.137	-0.663	39060.145110	83874.237798	192-25-13	180-13-11	2.004
7-D16	-126509.103	-3.911	-12891.568	-0.881	50418.922448	111454.519743	192-58-08	180-32-55	2.005
7-D15	-126511.057	-3.901	-12892.018	-0.916	50291.762218	115884.128212	193-27-36	180-29-28	2.002
7-D14	-126513.004	-3.892	-12892.484	-0.941	50177.547728	119048.736764	193-43-26	180-15-50	2.002
7-D13	-126514.949	-3.893	-12892.959	-0.954	50192.289387	120695.261346	193-48-52	180-05-26	2.006
7-D12	-126516.897	-3.890	-12893.438	-0.968	50155.473820	122468.356296	194-08-00	180-19-08	2.003
7-D11	-126518.839	-3.847	-12893.927	-0.984	49602.937169	124494.537576	194-33-57	180-25-57	1.968
7-D10	-126520.744	-3.306	-12894.422	-0.853	42628.959132	107922.194632	194-20-03	179-46-06	1.446
7-2	-126522.145	-2.142	-12894.780	5.040	27620.618760	-637671.610800	97-48-59	83-28-56	5.449
K-20	-126522.886	3.953	-12889.382	4.951	-50951.727046	-626414.808586	354-33-37	76-44-38	4.715
K-19	-126518.192	13.194	-12889.829	-1.615	-170068.403826	204326.880080	352-10-33	177-36-56	8.580
K-18	-126509.692	10.753	-12890.997	1.230	-138616.890741	-155606.921160	46-47-08	234-36-35	3.290
K-17	-126507.439	0.336	-12888.599	14.881	-4330.569264	-1882557.199759	98-43-50	231-56-42	12.629
K-16	-126509.356	-0.929	-12876.116	12.637	11961.911764	-1598698.731772	8-51-34	90-07-44	1.000
合計					倍面積 面積 地積	118.507503 -118.507503 59.25 59.25 59.25			67.315

画地面積（座標法）計算書

画地番号： 7_3

測点名	[1] X(i)	[2] X(i+1)-X(i-1)	[3] Y(i)	[4] Y(i+1)-Y(i-1)	[2]*[3]	[1]*[4]	方向角	夾角	距離
K-21	-126539.935	18.294	-12889.058	-0.285	-235792.427052	36063.881475	358-54-41	177-07-02	17.052
K-20	-126522.886	17.790	-12889.382	-5.722	-229302.105780	723963.953692	277-48-59	98-54-18	5.449
7-2	-126522.145	0.204	-12894.780	-5.536	-2630.535120	700426.594720	194-24-44	96-35-45	0.554
7-D9	-126522.682	-2.480	-12894.918	-0.657	31979.396640	83125.402074	194-57-19	180-32-35	2.011
7-D8	-126524.625	-3.872	-12895.437	-1.026	49931.132064	129814.265250	194-43-34	179-46-15	1.995
7-D7	-126526.554	-3.860	-12895.944	-1.032	49778.343840	130575.403728	195-12-36	180-29-02	2.001
7-D6	-126528.485	-3.864	-12896.469	-1.062	49831.956216	134373.251070	195-31-32	180-18-56	2.006
7-D5	-126530.418	-3.861	-12897.006	-1.083	49795.340166	137032.442694	195-48-43	180-17-11	2.004
7-D4	-126532.346	-3.851	-12897.552	-1.111	49668.472752	140577.436406	196-22-24	180-33-41	2.004
7-D3	-126534.269	-3.841	-12898.117	-1.136	49541.667397	143742.929584	196-34-43	180-12-19	2.001
7-D2	-126536.187	-3.834	-12898.688	-1.153	49453.569792	145896.223611	196-53-48	180-19-05	2.002
7-D1	-126538.103	-3.829	-12899.270	-1.166	49391.304830	147543.428098	196-58-35	180-04-47	2.000
7-D	-126540.016	-3.077	-12899.854	10.173	39692.850758	-1287291.582768	96-10-33	79-11-58	10.820
7-C	-126541.180	0.081	-12889.097	10.796	-1044.016857	-1366138.579280	1-47-39	85-37-06	1.246
合計					倍面積 面積 地積	294.949646 -294.949646 147.47 147.47 147.47			53.145